

2018

Registration Brochure



Backing The Badge



Colorado State EMS Conference

Keystone, Colorado | November 8-11, 2018



WELCOME

EMSAC 2018 Participants!

We hope you will join us this year at the 2018 Colorado State EMS Conference as we Back the Badge. This conference continues to build on its impressive tradition of superb EMS education in the beautiful Rocky Mountains. This is the premier event where EMS professionals, agency managers and administrators, EMS instructors, medical directors and allied professionals learn about trends and techniques that enhance patient care and agency operations. It is a four-day event, set in the heart of the beautiful Colorado Rockies, which provides networking and idea sharing for everyone in the EMS profession. The Emergency Medical Services Association of Colorado (EMSAC) is proud to bring you Colorado's foremost EMS educational event. We look forward to seeing you there!

EDUCATION

At the 2018 Conference, our profession's premier EMS educators from within Colorado and across the nation will bring you the greatest variety of courses ever offered. The schedule of preconference workshops and conference topics offer many choices of programs for your selection.

MOTIVATION

Keeping informed about the evolution of EMS into the future...
Learning from the nation's foremost educators...
Meeting other EMS professionals...
Enhancing your profession...
Improving patient care...
Perfecting skills...

SUCCESS

Plan now to attend the 2018 Colorado State EMS Conference. Combine your professional and personal goals and the finest EMS education during a refreshing, late-fall in Keystone. You will learn techniques and information to improve yourself, your patient care, your EMS agency and your state's EMS delivery system. With the region's largest exhibition of EMS products and service suppliers, this event will be Colorado's EMS highlight of 2018. Don't miss this chance to meet some of the finest in the EMS profession: your colleagues. More than just an annual conference, the 2018 Colorado State EMS Conference, where Education+Motivation=Success, will continue to be the standard by which other state EMS conferences are measured.



Scott Sholes
EMSAC President



Jason Kotas
Conference
Chair



DJ Head
Conference
Co-Chair

Thank you to our sponsors:

Diamond Sponsor:



Ruby Sponsor:



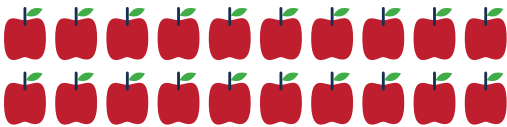
Emerald Sponsors:



Opal Sponsor:



CONFERENCE ATTENDEES
CAN EARN MORE THAN

 **20**
HOURS

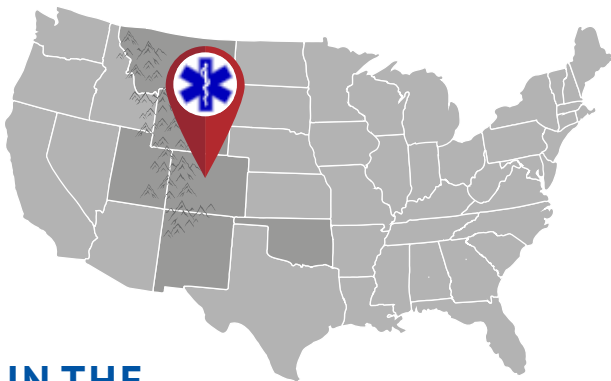
OF CONTINUING EDUCATION
DURING THE CONFERENCE

OVER

69 

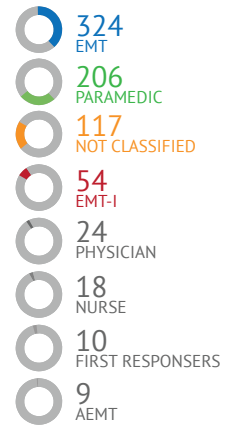
SESSIONS TO CHOOSE FROM

LARGEST
EMS CONFERENCE



IN THE
ROCKY MOUNTAIN REGION

EMS ATTENDEES



DEDICATED
TO PROVIDING
QUALITY
SERVICE



2018 Colorado State EMS Conference Faculty

SHANE BAIRD

Durango Fire Protection District

JEANNE-MARIE BAKEHOUSE

Colorado Department of Public Health & Environment

RUSSELL BARTT

Swedish Medical Center

WHITNEY BARRETT, MD

Denver Health

SCOTT BRANNEY, MD

St. Anthony Hospital

MARK BROWN

In His Service Counseling

MARC BURDICK

Eagle County Paramedic Services

STEPHANIE BURKE

Colorado Department of Public Health & Environment

MATT CONCIALDI

AMR Golden

CARL CRAIGLE

Platte Valley Ambulance Service

AARON EBERHARDT, MD

Denver Health

DENNIS EDGERLY

Arapahoe Community College

KRISTI ELSENER

Children's Hospital Colorado

REUBEN FARNSWORTH

RockStar Education and Consulting

WILLIAM FERGUSON

University of Alabama at Birmingham

LYNN GARST

Colorado Department of Public Health & Environment

STEVEN GRAYSON

MEDIC Training Solutions

JULIE HALL

AMR Longmont

JUSTIN HARPER

Denver Health Paramedic Division

JENNIFER KANG, MD

Denver Health

DAVID KEARNS

St. Anthony Hospital/Flight For Life Colorado

TOM LOMBARDO

Bollman Technical Education Center

DYLAN LUYTEN

Carepoint, PC

LAURA MADSEN

UCHealth

PATRICK MAHAR

Children's Hospital Colorado

CHARLIE MAINS, MD

Centura Health

MARIA MANDT, MD

Children's Hospital Colorado

JASON MARTIN

HCA Midwest

KATHLEEN MAYER

Flight For Life Colorado

KEVIN MCVANEY, MD

Denver Health

CHRIS MULBERRY

Platte Valley Ambulance Service

TIMOTHY NEADERHISER

AirLife Denver

JOHN NICHOLS

InterMountain Neurosurgery

MICHAEL OVERBECK

UCHealth

JONATHAN POLITIS

Politis Emergency Services Education

ROBERT PUTFARK

Arvada Fire Protection District

LARA RAPPAPORT, MD

Denver Health

JEFF REHMAN

North Metro Fire Rescue District

DAVID RICHTER

St. Anthony Hospital

LYNN RIEMER

ACT on Drugs, Inc.

KELLEY ROSWELL

Children's Hospital Colorado

DAVID SANKO

Centura Health-SDG Prehospital Services

GINA SCARBROUGH

Flight For Life Colorado

SUE SLOAN, MD

Swedish Medical Center

TRAVIS SMITH

Arapahoe Community College

GINA SORIYA, MD

St. Anthony Hospital

DON STROUP

Arapahoe Community College

TROY TUKE

Clark County Fire Department

ANNE WAGNER

UCHealth

THOMAS WELDON

Jefferson County Coroners Office

PAUL WERFEL

Stony Brook University

AREK WIKTOR

UCHealth

TIMOTHY ZIMMERMAN

Thompson Valley EMS



GET CERTIFIED!

AT THE
COLORADO EMS CONFERENCE
KEYSTONE, COLORADO

**EXAMS OFFERED ON
FRIDAY, NOVEMBER 9, 2018**



For additional information visit
www.IBSCertifications.org
or call (770) 978-4400.

Specialty Certification is a voluntary credentialing process designed to validate essential knowledge and judgment required for safe and competent practice. The IBSC/BCCTPC credentials provide designations for paramedic professionals who demonstrate knowledge, experience and excellence as a specialty paramedic.

The FP-C & CCP-C Exams are based upon the critical care paramedic transport standards and practice.

The TP-C® and TR-C® exams are based on the 10 critical competency domains published in 2016 by the National TEMS Initiative and Council (NTIC), the clinical guidelines developed by the Committee for Tactical Emergency Casualty Care (C-TECC) and the Committee on Tactical Combat Casualty Care (CoTCCC) for the civilian and military communities respectively.

The CP-C exam reflects the wide-range of Community Paramedic practice by certified emergency medical service providers who provide community-based, out-of-hospital medical services to medically underserved and medically served, yet vulnerable, populations.

ELIGIBILITY

- Certification as a Paramedic-Critical Care (P-CC) can be issued based on either CCP-C or FP-C certification by the IBSC/BCCTPC
- Paramedic-level provider exam candidates must hold a current unrestricted paramedic license. TR-C requires EMR or higher certification
- Three years of experience in area of specialty is encouraged.

FEES

- FP-C & CCP-C & CP-C Paper/Pencil - \$325 (\$225 for IAFCCP members)
- TP-C Paper/Pencil - \$325 (\$225 for CO EMS Conference Registrants – call the office to register)
- TR-C Paper/Pencil - \$195 (\$175 for CO EMS Conference Registrants – call the office to register)

Physician's Forum

Look for details on the website at: **www.emsac.org**

THURSDAY Pre-Conference Schedule | November 8, 2018

7:30 AM–8:00 AM Registration and Continental Breakfast						
8:00 AM to 12:00 PM	PCAD1 (Full-Day 8:00 AM–5:00 PM) Cardiac Care Boot Camp Carl Craigle	PCAD2 (Full-Day 8:00 AM–5:00 PM) Street Drugs—What You Need To Know Lynn Riemer	PCAD3 (Two Day) (Full-Day 8:00 AM–5:00 PM) ALS Refresher Core Content Workshop Jonathan Politis Paul Werfel	PCAD4 (Full-Day 8:00 AM–5:00 PM) RockStar Critical Care Refresher Reuben Farnsworth	PCAD5* Updates And Practice In Pre-hospital Burn Care Anne Wagner	PCAD6 (Full-Day 8:00 AM–5:00 PM) Pre-Conference Cadaver Lab Kevin McVane, MD Lara Rappaport, MD Aaron Eberhardt, MD Whitney Barrett, MD
12:00 PM Lunch (provided for workshop registrants)						
1:00 PM to 5:00 PM	PCAD1 (Full-Day 8:00 AM–5:00 PM) Cardiac Care Boot Camp Carl Craigle	PCAD2 (Full-Day 8:00 AM–5:00 PM) Street Drugs—What You Need To Know Lynn Riemer	PCAD3 (Two Day) (Full-Day 8:00 AM–5:00 PM) ALS Refresher Core Content Workshop Jonathan Politis Paul Werfel	PCAD4 (Full-Day 8:00 AM–5:00 PM) Critical Care Refresher Reuben Farnsworth	PCAD5* Updates And Practice In Pre-hospital Burn Care Anne Wagner	PCAD6 Pre-Conference Cadaver Lab Kevin McVane, MD Lara Rappaport, MD Aaron Eberhardt, MD Whitney Barrett, MD
5:00 PM On your own for dinner						

FRIDAY Conference Schedule | November 9, 2018

7:30 AM–8:00 AM		Continental Breakfast in Exhibit Hall					
8:00 AM to 5:15 PM	PCAD3* (Two-Day) Updates And Practice in Pre-hospital Burn Care Jonathan Politis Paul Werfel		8:30 AM to 10:00 AM	General Session Featured Keynote Presentation Troy Tuke			
10:00 AM–10:30 AM				Break			
10:30 AM to 12:00 PM	Session 1 Misses and Mimics: Advanced 12 Lead For ALS Providers Dylan Luyten	Session 2 Crashing Asthmatic Chris Mulberry	Session 3 TMI On Pediatric TBI Maria Mandt	Session 4 Letting Good People Make Bad Decisions: Consent And Refusal In EMS Shane Baird	Session 5 The Protocol Paradox Steven Grayson	Session 6* Cadaver Lab Abdominal Sue Sloan, MD	Hands-On Skills Adult (ALS & BLS) St. Anthony's Prehospital EMS
12:00 PM–1:15 PM		Lunch Break (Lunch will be served until 1:15 PM)					
1:30 PM to 2:30 PM	Session 7 You're Lost Without A MAP Shane Baird	Session 8 EKG's For EMT's"- MI Recognition For EMS Personnel David Sanko	Session 9 A Trauma Patient With Burns: Managing Competing Interests And Priorities Arek Wiktor	Session 10 Electronics In EMS: Treat Your Patient, Not Your App Reuben Farnsworth	Session 11 Stroke From The Field To Comprehensive Care Russell Bart	Session 12* Cadaver Lab Abdominal Sue Sloan, MD	Hands-On Skills Adult (ALS & BLS) Flight For Life Colorado
2:30 PM–3:00 PM		Break in Exhibit Hall					
3:00 PM to 4:00 PM	Session 13 Let's Catch A Baby! Pitfalls Of Newborn Care Timothy Neaderhiser	Session 14 What's An Ache Like You Doing In A Joint Like This? Hands-On Orthopedic Assessment Steven Grayson	Session 15 More Case Reviews For The ALS Provider—2018 David Sanko	Session 16 Bedrooms, Bathtubs, And Broomsticks: Things They Didn't Warn Me About In Paramedic School Reuben Farnsworth	Session 17 Death By Ventilation! And Other Airway Management Tips! Chris Mulberry Chris Mulberry Justin Overholt	Session 18* Cadaver Lab Thoracic Charles Mains, MD	Hands-On Skills Adult (ALS & BLS) Flight For Life Colorado
4:00 PM–4:15 PM		Class Change					
4:15 PM to 5:15 PM	Session 19 Got ROSC And How To Keep It Timothy Neaderhiser	Session 20 What's That in My Patient?: The Good, The Bad, And The Implanted Reuben Farnsworth	Session 21 The Imperfect Storm Gina Scarbrough	Session 22 Prehospital Recognition and Treatment Of Type I Diabetes Justin Harper	Session 23 How To Deliver Bad News Julie Hall	Session 24* Cadaver Lab Thoracic Charles Mains, MD	
5:15 PM–5:45 PM		Reception in Exhibit Hall					

* Indicates repeated or continued sessions

Conference sessions may be approved for continuing education credit by Colorado State recognized Education Centers or CE Education Groups. Please visit the EMS Conference web site at www.emsac.org for a detailed grid of recommended CE hours and suggested recertification categories. Most conference sessions will meet recertification requirements for the National Registry of EMTs. To determine if a particular session meets these requirements, you must first be familiar with the recertification requirements and objectives for your level of certification, then compare the session description to those requirements and objectives.

For information about NREMT recertification, please contact NREMT or visit their web site at www.nremt.org

SATURDAY Conference Schedule | November 10, 2018

7:30 AM–8:00 AM Continental Breakfast in Exhibit Hall							
8:00 AM to 9:30 AM	Session 25 Head And Neck Emergencies William Ferguson	Session 26 Assessment With A Purpose Dennis Edgerly	Session 27 Pediatric EMS Cases Studies Paul Werfel	Session 28 Neurotoxins Of Mass Destruction John Nichols	Session 29 Trauma Trivia: Learning Can Be Fun! Jason Martin		
9:30 AM–9:45 AM Class Change							
9:45 AM to 11:15 AM	Session 30 Capnography: Best Practices, Documentation, And Advanced Uses Steven Grayson	Session 31 Aneurysms For EMTs And Medics Paul Werfel	Session 32 Coroner Scenes And The First Responder 2018 Thomas Weldon	Session 33 The Golden Years: Care Of The Trauma Geriatric Patient Jason Martin	Session 34 Avoiding The Star Of Stupidity: Ethics For EMS Jonathan Politis	Session 35* Cadaver Lab Brain Jennifer Kang, MD	Hands-On Skills Adult (ALS & BLS) Children's Hospital ED Physicians
11:15 AM–11:30 AM Break in Exhibit Hall							
11:30 AM to 12:30 PM	Session 36 Crew Resource Management, Who's Got Your Back Dennis Edgerly	Session 37 Managing The Difficult Airway With basics! Jonathan Politis	Session 38 Syncope: Risk Stratification And Management William Ferguson	Session 39 Dingers, Stunners And Getting Your Bell Rung: Recognition And Treatment Of Concussions Steven Grayson	Session 40 The Crashproof Mindset; Safer Operation Of The Emergency Vehicle With A Sterile Flight Deck Timothy Zimmerman	Session 41* Cadaver Lab Brain Jennifer Kang, MD	Hands-On Skills Adult (ALS & BLS) HealthOne EMS
12:30 PM–1:30 PM Lunch Break (Lunch will be served until 1:15 PM)							
12:30 PM to 1:30 PM	Session 42 Hospital, Flight, Private And Fire Based EMS. Past, Present And Future Eugene Eby, Kathleen Mayer, John Mason, and Robert Lovelace						
1:45 PM to 3:15 PM	Session 43 Cardiac Assessment, The 12 Lead And Beyond Dennis Edgerly	Session 44 Treating The Bleeding Patient In 2018 Jason Martin	Session 45 A Walk In The Park... Case Studies In Wilderness Medicine And Backcountry Rescue Jonathan Politis	Session 46 Fluids, Pressors, And Luck: Managing Hypotension Don Stroup	Session 47 Laugh Out Loud Until You Gasp For Air: Psychoneuroimmunology, The EMS Providers Best Friend Mark Brown	Session 48* Cadaver Lab Heart Dissection Scott Branney, MD	Hands-On Skills Adult (ALS & BLS) Children's Hospital ED Physicians
3:15 PM–3:35 PM Class Change							
3:45 PM to 4:45 PM	Session 49 A Look Inside: Syncope Revealed In The ECG Michael Overbeck	Session 50 Carbon Monoxide Emergencies Paul Werfel	Session 51 Emergency Medicine Hodge-Podge II William Ferguson	Session 52 Frostbite In January... Amputation In July: Have We Advanced Beyond Supportive Care? Anne Wagner	Session 53 Addictions In EMS And Those We Serve Jeff Rehman	Session 54* Cadaver Lab Heart Dissection Scott Branney, MD	Hands-On Skills Adult (ALS & BLS) HealthOne EMS
6:30 PM to 7:30 PM Awards Reception and Presentation							

SUNDAY Conference Schedule | November 11, 2018

7:30 AM–8:00 AM Continental Breakfast in Exhibit Hall					
8:00 AM to 9:15 AM	Session 55 Effective Strategies for Transport Ventilation David Kearns	Session 56 Understanding And Responding To Children In Crisis: A Resource Kit For EMS And ED Providers Lynn Garst	Session 57 That's Going To Leave A Mark! Jason Martin	Session 58 Post Traumatic Stress Disorder In Emergency Medical Services Tom Lombardo	Session 59 Colorado EMS And Trauma: State Of The State Jeanne-Marie Bakehouse
9:15 AM–9:30 AM Break					
9:30 AM to 10:45 AM	Session 60 Cardiac Arrest, TOR And LVAD David Richter	Session 61 Location, Location, Location: Penetrating Trauma Care Jason Martin	Session 62 Identifying Pediatric Victims Of Human Trafficking Kristi Elsener	Session 63 When Mutual Aid Isn't Enough—Responding To A Category A Bioterrorism Agent Or Nerve Agent Attack Stephanie Burke	Session 64 Using Patient Engagement In The Quality Management Process Marc Burdick
10:45 AM–11:00 AM Class Change					
11:00 AM to 12:15 PM	Session 65 Street Drugs—The Opioid Epidemic Lynn Riemer	Session 66 When The Frail Fall: Principles In Geriatric Trauma Evaluation And Management Gina Soriya, MD	Session 67 Yet MORE Cases That Make You Go..."HMMMMM!" Jeff Rehman	Session 68 How Sure Is Sure enough? Robert Putfark	Session 69 Child Abuse And Neglect: Mandatory Reporting For EMS Providers Matt Concialdi
12:15 PM Conference Adjourns					

FEATURED KEYNOTE SPEAKER



TROY TUKE
FRIDAY / NOVEMBER 9, 2018
8:30 AM TO 10:00 AM

The 2017 Las Vegas shooting occurred on the night of Sunday, October 1, 2017, when a gunman opened fire on a crowd of concert-goers at the Route 91 Harvest music festival on the Las Vegas Strip in Nevada, leaving 58 people dead and 851 injured. Chief Tuke will talk about how the event unfolded, the EMS response and what has happened since then.

Chief Troy Tuke began his career in EMS after obtaining Paramedic and RN degrees from BYU-Idaho in 1989. Chief Tuke has worked full time as a RN, as well as a Paramedic specializing in Critical Care/ ER and Flight Nursing prior to his employment with the Clark County Fire Department. Chief Tuke has been a Nationally Registered Paramedic since 1988.

Chief Tuke's career with the Clark County Fire Department began in 1996 when he was hired as a Firefighter/Paramedic. After eight years of service, he was promoted to Fire

Engineer in 2004. After serving four years as an Engineer, he was promoted to EMS Coordinator in 2008. In 2010, Chief Tuke was promoted to Assistant Fire Chief of Emergency Medical Services. Chief Tuke is currently working as the Assistant Fire Chief over EMS. Chief Tuke was deployed to Hurricanes Katrina and Rita as a Medical Specialist for Nevada Task Force 1 Urban Search and Rescue Team. He currently maintains his RN license, National Registry Paramedic Certification and license, and is an EMS Master Instructor, Clinical Instructor at the UNLV School of Medicine and a Paramedic Preceptor. Chief Tuke is a member of the IAFC EMS section and also serves on the NAEMT Board of Directors representing region 4.

Chief Tuke's hobbies include mountain biking, skiing and he is involved in many church programs involving youth ages 12-18. He has been married to his wife Debbie for 30 years and has two daughters, Brittany, Rylie, and a son-in-law, Travis.

Pre-Conference Workshops | THURSDAY November 8, 2018

PCAD1

(Full-Day 8:00 AM–5:00 PM)

Cardiac Care Boot Camp

Carl Craigle

Our primary clinical focus as EMS providers is to preserve the “Big 3” (Heart, Lungs and Brain). Join us for a deep dive into the heart and cardiovascular system. A&P, Pharm, assessment, EKG and 12 lead principles along with an opportunity to work with classic cardiac monitors from “Back in the day”!

PCAD2

(Full-Day 8:00 AM–5:00 PM)

Street Drugs—What You Need To Know

Lynn Riemer

Drug abuse continues to be a major problem plaguing society today. This session will cover new trends in substance abuse: Alcohol, OTC products, Designer Drugs, Marijuana, Opiates, and Cocaine. Physical findings of the various drugs will also be discussed.

PCAD3 (TWO DAY)

(Full-Day 8:00 AM–5:00 PM)

ALS Refresher Core Content Workshop

Jonathan Politis and Paul Werfel

The ALS refresher workshop will focus on 15 of the 24-hours of mandatory core content required by the National Registry of EMTs to meet the objectives of The DOT Advanced Refresher. Attendance at this pre-conference will assist in completing DOT Advanced Refresher requirements over a two-year period.

PCAD4

(Full-Day 8:00 AM–5:00 PM)

Critical Care Refresher

Reuben Farnsworth

The RockStar Critical Care Refresher is recognized by the IBSC to meet your requirements for the required 16 hour refresher for recertification of your FP-C or CCP-C. This course is also a great primer for those preparing to challenge the exam and become certified.

PCAD5*

(8:00 AM–12:00 PM and 1:00 PM–5:00 PM)

Updates And Practice In Prehospital Burn Care

Anne Wagner

A four-hour class with lecture, case studies, and simulations with the most up-to-date information from the American Burn Association.



PCAD6

Pre-Conference Cadaver Lab

(Full-Day 8:00 AM–5:00 PM)

Kevin McVane, MD; Aaron Eberhardt, MD; Whitney Barrett, MD; and Lara Rappaport, MD

Don't miss this opportunity to participate in a cadaver dissection led by a team of awesome, EMS-friendly physicians who love to teach. View the dissection of the cadaver and discuss the most common penetrating and blunt injuries to the internal organs.

NOTE: Limited to the first 25 attendees.

FRIDAY November 9, 2018 | 10:30 AM to 12:00 PM

PCAD3* (TWO DAY)

(Full Day 8:00 AM–5:15 PM)

ALS Refresher Core Content Workshop

Jonathan Politis and Paul Werfel

The ALS refresher workshop will focus on 15 of the 24-hours of mandatory core content required by the National Registry of EMTs to meet the objectives of The DOT Advanced Refresher. Attendance at this pre-conference will assist in completing DOT Advanced Refresher requirements over a two-year period.

Session 1

Misses And Mimics: Advanced 12 Lead For ALS Providers

Dylan Luyten

Using an engaging case-based format, learn to recognize common 12 lead “misses” and “mimics” of acute myocardial ischemia.

Session 2

Crashing Asthmatic

Chris Mulberry

Asthma attacks can be scary for a patient and when the patient progresses to status asthmaticus it becomes scary for the provider. This session will identify and treat patients who are at risk or have developed status asthmaticus. Students will learn what to do when standard treatments do not work.

Session 3

TMI On Pediatric TBI

Maria Mandt

Severe Traumatic Brain Injury (TBI) continues to be the leading cause of death and disability in children. The prehospital care of injured children directly impacts morbidity and mortality. A case example format reviews the recognition and initial management of pediatric TBI.

Session 4

Letting Good People Make Bad Decisions: Consent And Refusal In EMS

Shane Baird

More and more frequently, prehospital providers are caught between the rock of potential liability and the hard place of patient autonomy. This presentation explored the history of patient autonomy, notes current issues in consent/refusal, and gives providers practical tools for the field.

Session 5

The Protocol Paradox

(Kelly) Steven Grayson

This session reviews how to formulate protocols as treatment guidelines rather than absolutes. Learn how CQI can empower (or discourage) medics from utilizing critical thinking skills and exercising sound clinical decision-making, and make your agency noted for clinical excellence.

Session 6*

Cadaver Lab Abdominal

Sue Sloan, MD

A visual tour through the abdominal cavity will review the external anatomy and internal structures including the stomach, liver, large and small intestines, and other solid and hollow organs.

NOTE: This session is limited to 25. Space is limited; please register early.



Hands-On Skills

St. Anthony Prehospital Services ALS/BLS

This session will be conducted by instructors from St. Anthony Prehospital Services. Sim-Man and other human patient simulators will be utilized to provide scenario-based training in this hands-on skills lab. The goal will be to expose the participant to best practices in the management of high-acuity, low-volume patients and improve his/her comfort level in providing care to these patients.

NOTE: This session is limited to 20. Space is limited; please register early.

* Indicates repeated or continued sessions

Session 7

You're Lost Without A MAP

Shane Baird

Historically, management of critical patients in EMS focused on interpretation of directly observed vital signs, such as pulse and blood pressure. However, to ensure adequate end-organ perfusion, a new standard should be used: mean arterial pressure.

Session 8

EKG's For EMT's—MI Recognition For EMS Personnel

David Sanko

Review the patient experiencing a STEMI –applicable for all EMS provider levels. Discussion includes the current EMS treatment options for STEMIs, including Cardiac Alert Criteria from the field and MI location identification using EKG examples.

Session 9

A Trauma Patient With Burns: Managing Competing Interests And Priorities

Arek Wiktor

Burn patients and trauma patients pose different challenges to prehospital personnel. More complex still are patients who have both traumatic and burn injuries. This presentation highlights the unique circumstances of caring for a patient with competing interests, and prioritizing care.

Session 10

Electronics in EMS: Treat Your Patient, Not Your App

Reuben Farnsworth

There are countless apps that will do everything from calculating stroke scores to performing 12 leads. Which apps are right for you and do they have a place in your ambulance? There are some excellent apps and we can use them in EMS. Join us as we discuss and evaluate the use of apps in EMS.

Session 11

Stroke From The Field To Comprehensive Care

Russell Bartt, MD

A stroke neurologist and neurointerventional surgeon focus on identification of stroke syndromes in the field. Management including decisions regarding tPA and thrombectomy are emphasized using a case-based approach.



Session 12*

Cadaver Lab Abdominal Sue Sloan, MD

A visual tour through the abdominal cavity will review the external anatomy and internal structures including the stomach, liver, large and small intestines, and other solid and hollow organs. NOTE: This session is limited to 25. Space is limited; please register early.



Hands-On Skills

Flight For Life Colorado ALS & BLS Airway Lab Flight For Life Staff

Join the crews of Flight For Life Colorado for this hands-on, interactive ALS/BLS airway lab. This lab provides ample opportunity for the provider to practice good technique in airway

control. Best practices in surgical cricothyrotomy, intubation, NPA/OPA, supraglottic airway(s), and BVM ventilation will be covered.

NOTE: This session is limited to 20. Space is limited; please register early.

Session 13

Let's Catch A Baby! Pitfalls Of Newborn Care

Timothy Neaderhiser

Planned home birth or just bad timing: This presentation reviews common complications of labor and delivery. Review home births and the potential complications. Pitfalls of newborn care are also included.

Session 14

What's An Ache Like You Doing In A Joint Like This? Hands-On Orthopedic Assessment

Steven Grayson

When it comes to orthopedic assessment, there are plenty of physical exam techniques that accurately rule out fractures, and thus the need for x-rays. Gain more diagnostic information in the field than we thought was possible.

Session 15

More Case Reviews For The ALS Provider—2018

David Sanko

A new batch of real life cases test even the most experienced provider. Students are given the patient presentation from the EMS perspective and then the case is followed through the hospital course to discharge. Compare your treatment plan to what actually transpired.

Session 16

Bedrooms, Bathtubs, And Broomsticks: Things They Didn't Warn Me About In Paramedic School

Reuben Farnsworth

The Field... The very term invokes visions of a mythical realm where students sojourn after school. This presentation explores things you never knew you would do, from reattaching colostomy bags to the 400 lb. patient wedged between the toilet and the bathtub in a single wide trailer.

Session 17

Death By Ventilation! And Other Airway Management Tips!

Chris Mulberry

We are hammered with the ABCs with a focus on airway management in school. The technique for using a BVM is covered but utilizing the BVM is not one of the sexy things we get to do in emergency medicine and we forget about its importance.



Session 18*

Cadaver Lab Thoracic Charles Mains, MD

This session will review the anatomy of the thoracic cavity. NOTE: This session is limited to 25. Space is limited; please register early.



Hands-On Skills

Flight For Life Colorado ALS & BLS Airway Lab Flight For Life Staff

Join the crews of Flight For Life Colorado for this hands-on, interactive ALS/BLS airway lab. This lab provides ample opportunity for the provider to practice good technique in airway control. Best practices in surgical cricothyrotomy, intubation, NPA/OPA, supraglottic airway(s), and BVM ventilation will be covered. NOTE: This session is limited to 20. Space is limited; please register early.

* Indicates repeated or continued sessions

Session 19

Got Return of Spontaneous Circulation (ROSC) And How To Keep It

Timothy Neaderhiser

Have you gotten ROSC only to see it slip away before you reach the ER? This session dives into best practices for maintaining a pulse and BP depending on downtime, what was done, and pathology. In addition to ventilation, fluids, vasopressors, target SBP and core temperature are reviewed.

Session 20

What's That In My Patient?: The Good, The Bad, And The Implanted

Reuben Farnsworth

This session explores all the gadgets patients use to aid medical situations. Common devices that are implanted or attached and common issues with these devices are reviewed with the best methods for EMS providers to assist in their operation or malfunction.

Session 21

The Imperfect Storm

Gina Scarbrough

A rock climber is critically injured in a remote area of the Colorado high country. Her life is dependent on the timely, skillful and plain gutsy actions of multiple rescue agencies, military air support and civilian air medical assets. What should have been a tragedy resulted in a surprising outcome.

Session 22

Prehospital Recognition And Treatment Of Type I Diabetes

Justin Harper

This presentation identifies gaps in healthcare provider knowledge regarding Type I Diabetes (T1D). Early recognition of the signs and symptoms of new onset T1D can save lives. Treatment guidelines for DKA, hypoglycemia and differential diagnosis for T1D and Type 2 are covered in depth.

Session 23

How To Deliver Bad News

Julie Hall

We all learn the mechanics of delivering excellent medical care, but do not get much training in the art of medicine. This session reviews how to deliver difficult news including MI, stroke, and the death of a loved one.



Session 24*

Cadaver Lab Thoracic

Charles Mains, MD

This session will review the anatomy of the thoracic cavity.

NOTE: This session is limited to 25. Space is limited; please register early.

Session 25

Head And Neck Emergencies

William Ferguson

Of all the emergent conditions the emergency provider can face, none can strike fear or anxiety in the mind of the provider more than those of the head and neck. This course will discuss acute emergencies of the head and neck including selected ocular and ENT emergencies.

Session 26

Assessment With A Purpose

Dennis Edgerly

This session will discuss patient assessment and how an appropriate focused and then more detailed assessment can be conducted based on a working differential diagnosis. Learners will hear how to prioritize questions and use assessment tools to help them arrive at the most appropriate treatment.

Session 27

Pediatric EMS Cases Studies

Paul Werfel

Do you find dealing with young patients challenging? Most of us do. As EMS practitioners, we do not often see pediatric patients, in fact, thankfully we see very, very few critically ill or injured pediatric patients. While that is a good thing for the patients in general, we never get comfortable at assessing them. Join EMS author Paul Werfel as we cover case studies that highlight the following topics essential for prehospital practitioners: effectively assessing the pediatric patient, pediatric trauma, pediatric sob, and pediatric medical emergencies.

Session 28

Neurotoxins Of Mass Destruction

John Nichols

The objective of this session is to obtain a working knowledge of synaptic based/receptor mediated mechanisms of organic based chemicals used as neurotoxins for creating mass casualties.

Session 29

Trauma Trivia: Learning Can Be Fun!

Jason Martin

Take a break from the same old traditional conference learning style. We will discuss the latest in trauma care with a variety of fun challenging interactive trivia questions. Topics will include new trends in trauma, burns, OB, peds and Geriatrics.



Session 30

Capnography: Best Practices, Documentation, And Advanced Uses

(Kelly) Steven Grayson

Learn how to understand capnography in depth, and how to use it for something beyond confirming tube placement.

Session 31

Aneurysms For EMTs And Medics

Paul Werfel

The word aneurysm comes from the Greek word for "widening". When these weak sections of vessels occur in the aorta, it is an ominous sign. When they leak or hemorrhage entirely the result is often a fruitless resuscitation effort. Who is predisposed to suffering aneurysms? What are the symptoms and if discovered, what is the management? Please join JEMS "Case of the Month" author in this interesting and interactive discussion.

Session 32

Coroner Scenes And The First Responder 2018

Thomas Weldon

Coroner scene cases engage first responders in a discussion regarding critical scene findings and the role of the coroner on a death scene.

Session 33

The Golden Years: Care Of The Trauma Geriatric Patient

Jason Martin

Advancement in medicine and pharmaceuticals has pushed the average life expectancy to almost 80. Specific pearls and pitfalls of assessing and treating geriatric patients will be covered in this presentation.

Session 34

Avoiding The Star Of Stupidity: Ethics For EMS

Jonathan Politis

Reputation management is a critical in having a successful and productive career. But providers keep screwing up by having the same lapses in ethical behavior over and over again! Torn from the pages of media this presentation will cover the "dirty half dozen" lapses in behavior that everybody needs to avoid.



Session 35*

Cadaver Lab Brain Dissection

Jennifer Kang, MD

A visual tour through the cranial vault will review the external and internal structures of the skull and brain as well as parts of the spine and other nervous structures. During the session each participant will have a brain to dissect. NOTE: This session is limited to 25. Please register early.



Hands-On Skills

Children's Hospital Colorado ALS/BLS Children's Hospital ED Physicians

Have you ever wanted to ask a Children's Hospital ER Physician a question while delivering a patient, but it just wasn't the right time? Here's your chance to participate in scenario-based learning, headed by The Children's Hospital ED physicians, in a fun, relaxed environment. Best practices will be discussed in the management of the acutely sick or injured pediatric patient. NOTE: This session is limited to 20 people. Please register early.

Session 36

Crew Resource Management, Who's Got Your Back

Dennis Edgerly

Crew Resource Management (CRM) and the culture of safety are concepts evolving in the EMS community to insure safer patient care. This session discusses the basics of CRM and how to implement it within an EMS service.

Session 37

Managing The Difficult Airway With Basics!

Jonathan Politis

Managing the airway and ventilating sounds simple enough but it's neither simple or basic! It's actually one of the most difficult things we do in the field for any provider level! Patients must be kept oxygenated for long enough to be able to employ more definitive airway tools. This presentation covers the art of initial airway management with an emphasis on initial mask ventilation and the importance of having the right airway tools.



Hands-On Skills HealthONE EMS

High-definition simulation equipment will be utilized to provide scenario-based/ real-time training in this skills lab. The goal will be to provide the participant with exposure to high-acuity, low-volume scenarios to improve his/her comfort level in treating difficult patient presentations. NOTE: This session is limited to 20 people. Please register early.

Session 38

Syncope: Risk Stratification And Management

William Ferguson

This will be a case based interactive lecture that will address key clinical, physical, and diagnostic findings pertinent to patients that have experienced syncope. It will allow the participants to understand the dynamic process of critical thinking and application of current trends in care.

Session 39

Dingers, Stunners And Getting Your Bell Rung: Recognition And Treatment Of Concussions

(Kelly) Steven Grayson

This session reviews the signs of post-concussive syndrome, how to provide proper on-the-field treatment, and the importance of removal from play and return-to-play criteria.

Session 40

The Crashproof Mindset: Safer Operation Of The Emergency Vehicle With A Sterile Flight Deck

Timothy Zimmerman

We all seek the safer ambulance design. Until we answer the question, "Why do we drive emergency vehicles the way we do?", we will struggle finding the safe ambulance. Could the safer ambulance answer be found in the sterile flight deck concept?



Session 41*

Cadaver Lab Brain Dissection

Jennifer Kang, MD

A visual tour through the cranial vault will review the external and internal structures of the skull and brain as well as parts of the spine and other nervous structures. During the session each participant will have a brain to dissect. NOTE: This session is limited to 25. Please register early.

SATURDAY November 10, 2018 12:30 PM to 1:30 PM

Session 42

Hospital, Flight, Private, And Fire Based EMS. Past, Present, And Future

Eugene Eby, Kathleen Mayer, John Mason, and Robert Lovelace

A four person discussion panel reviews cover the past, present, and future of hospital, flight, private, and fire based EMS programs. An open forum question and answer session will conclude this discussion.

Session 43

Cardiac Assessment, The 12 Lead And Beyond

Dennis Edgerly

Advanced level cardiac care in the prehospital setting must be based on an appropriate assessment of the patient and their medical condition. This session will look at the assessment of patients with cardiac conditions and will discuss how to assess beyond just a 12 lead.

Session 44

Treating the Bleeding Patient In 2018

Jason Martin

Blood loss is the main preventable cause of death after trauma. Early trauma care focuses on minimizing hemorrhage and restoring circulation effectively.

Session 45

A Walk In The Park...Case Studies In Wilderness Medicine And Backcountry Rescue

Jonathan Politis

Managing the airway and ventilating sounds simple enough but it's neither simple or basic ! It's actually one of the most difficult things we do in the field for any provider level !

Patients must be kept oxygenated for long enough to be able to employ more definitive airway tools. This presentation covers the art of initial airway management with an emphasis on initial mask ventilation and the importance of having the right airway tools.

Session 46

Fluids, Pressors, And Luck- Managing Hypotension

Don Stroup

This course will focus on the various medical and traumatic pathologies of hypotension. Best practice options will be presented including fluid management, vasopressors, and push-dose pressors.

Session 47

Laugh Out Loud Until You Gasp For Air: Psychoneuroimmunology, The EMS Providers Best Friend

Mark Brown

The sound of roaring laughter is far more contagious than any cough, sniffle or sneeze. Laughter also triggers healthy physical changes in the body, -strengthening the immune system, boosts energy, diminishes pain, and protects you from the damaging effects of stress. Best of all-it's priceless!



Session 48*

Cadaver Lab Heart Dissection

Scott Branney, MD

Dr. Scott Branney will teach you all about the inner workings of the heart, physiologically speaking. This hands-on dissection lab is guaranteed to be fun and low-stress. NOTE: This session is limited to 25. Please register early.



Hands-On Skills

Children's Hospital Colorado ALS/BLS Children's Hospital ED Physicians

Have you ever wanted to ask a Children's Hospital ER Physician a question while delivering a patient, but it just wasn't the right time? Here's your chance to participate in scenario-based learning, headed by The Children's Hospital ED physicians, in a fun, relaxed environment. Best practices will be discussed in the management of the acutely sick or injured pediatric patient. NOTE: This session is limited to 20 people. Please register early.

Session 49

A Look Inside: Syncope Revealed In The ECG

Michael Overbeck

Causes of syncope are often evident after a history and exam, but the ECG plays a vital role in diagnosis. In this session we'll cover eight cardiovascular causes of syncope that every prehospital provider must recognize.

Session 50

Carbon Monoxide Emergencies

Paul Werfel

What is it that is odorless, colorless, tasteless and deadly? Carbon monoxide is a ubiquitous non-irritating gas that claims thousand per year. CO in even small quantities can result in catastrophic impairment. Join former JEMS Case of the Month author Paul Werfel in this interactive discussion of this lethal agent.

Session 51

Emergency Medicine Hodge-Podge II

William Ferguson

This presentation spans the spectrum of several selected cardiology, pulmonary, metabolic, and psychiatric case based emergencies emphasizing key findings and pathophysiology that determine priority of care.

Session 52

Frostbite In January...Amputation In July: Have We Advanced Beyond Supportive Care?

Anne Wagner

This presentation reviews the importance of prehospital management of the hypothermic and frostbite patient. A new protocol that institutes thrombolytic therapy for severe frostbite at the rural hospital and enroute to a burn center.

Session 53

Addictions In EMS And Those We Serve

Jeff Rehman

This presentation deals with the delicate issues of our own human frailty-both with the patients we serve and even ourselves. This fact-filled hour looks into the multitude of addictions and many of their root causes.



Session 54*

Cadaver Lab Heart Dissection

Scott Branney, MD

Dr. Scott Branney will teach you all about the inner workings of the heart, physiologically speaking. This hands-on dissection lab is guaranteed to be fun and low-stress. NOTE: This session is limited to 25. Please register early.



Hands-On Skills

HealthONE EMS

High-definition simulation equipment will be utilized to provide scenario-based/ real-time training in this skills lab. The goal will be to provide the participant with exposure to high-acuity, low- volume scenarios to improve his/ her comfort level in treating difficult patient presentations. NOTE: This session is limited to 20 people. Please register early.

* Indicates repeated or continued sessions



Session 55

Effective Strategies For Transport Ventilation

David Kearns

There are a variety of transport ventilators available to EMS agencies. However providers often are not given effective strategies to manage the ventilation of patients. Review of the research from critical care and emergency medicine explores how to maximize the benefits of transport vents.

Session 56

Understanding And Responding To Children In Crisis: A Resource Kit For EMS And ED Providers

Lynn Garst

Pediatric calls can pose major challenges for providers, not only in addressing the physical needs of the child, but also responding their emotional distress as well. This workshop will provide some simple strategies and activities for reducing fear and helping calm both children and parents.

Session 57

That's Going To Leave A Mark!

Jason Martin

This course will review a variety of trauma patients that present unique challenges. New trends in trauma will be integrated in these cases. Adult and Peds cases will be covered.

Session 58

Post Traumatic Stress Disorder In Emergency Medical Services

Tom Lombardo

This session explores the taboo side of EMS. Some prefer to let the darkness lurk, while others believe it is healthy and therapeutic to discuss these feelings. Learn how to recognize this potentially self-treating phenomenon.

Session 59

Colorado EMS and Trauma: State Of The State

Jeanne-Marie Bakehouse

Overview of the state EMS and trauma system, including relevant policy updates and how those may impact your agency, state certification or scope of practice.

Session 60

Cardiac Arrest, Termination of Resuscitation (TOR) And Left Ventricular Assist Device (LVAD)

David Richter

Learn updated evidence based guidelines and best practice recommendations for EMS management of cardiac arrest. Updates on guidelines for termination of resuscitation and management of Left Ventricular Assist Device (LVAD's) are presented.

Session 61

Location, Location, Location: Penetrating Trauma Care

Jason Martin

Most trauma cases you encounter in your career will be due to blunt trauma mechanisms, such as falls, car crashes and similar events. However, you will encounter patients who have sustained penetrating trauma, the seriousness of which depends on the location.

Session 62

Identifying Pediatric Victims Of Human Trafficking

Kristi Elsener

Human trafficking is a challenging situation to recognize. The presentation identifies high-risk behaviors and historical features which might lead one to recognize a victim of human trafficking including case studies of potential victims of human-trafficking.

Session 63

When Mutual Aid Isn't Enough- Responding To A Category A Bioterrorism Agent Or Nerve Agent Attack

Stephanie Burke

With today's heightened focus on terrorism, it is increasingly important to understand the role of Colorado's various medical countermeasures. EMS is on the front line if a bioterrorism or nerve agent attack strikes and the resources managed by OEPR will provide life saving prophylaxis and antidotes.

Session 64

Using Patient Engagement In The Quality Management Process

Marc Burdick

The presentation will explore the role of patient experience (satisfaction) data in the EMS Quality Management Process.



Session 65

Street Drugs—The Opioid Epidemic

Lynn Riemer

Opiate addiction is taking over the nation and the statistics are alarming—one person overdoses every ten minutes in the U.S. Heroin use has increased over 75% in the last four years. This session will provide valuable information regarding Prescription Drugs, Heroin, and Fentanyl/Designer Fentanyl.

Session 66

When The Frail Fall: Principles In Geriatric Trauma Evaluation And Management

Gina Soriya, MD

The elderly population continues to grow dramatically. We will review fundamental physiologic changes that cause older adults to be more susceptible to injury. We will discuss measures to suspect and detect trauma, as well as prehospital management for better outcomes in this special population.

Session 67

Yet MORE Cases That Make You Go...“HMMMM!”

Jeff Rehman

This presentation appeals to the EMS detective within all of us. From the rare and thought provoking, to the downright strange and wild. Students will discuss challenging EMS cases from around the country.

Session 68

How Sure Is Sure Enough?

Robert Putfark

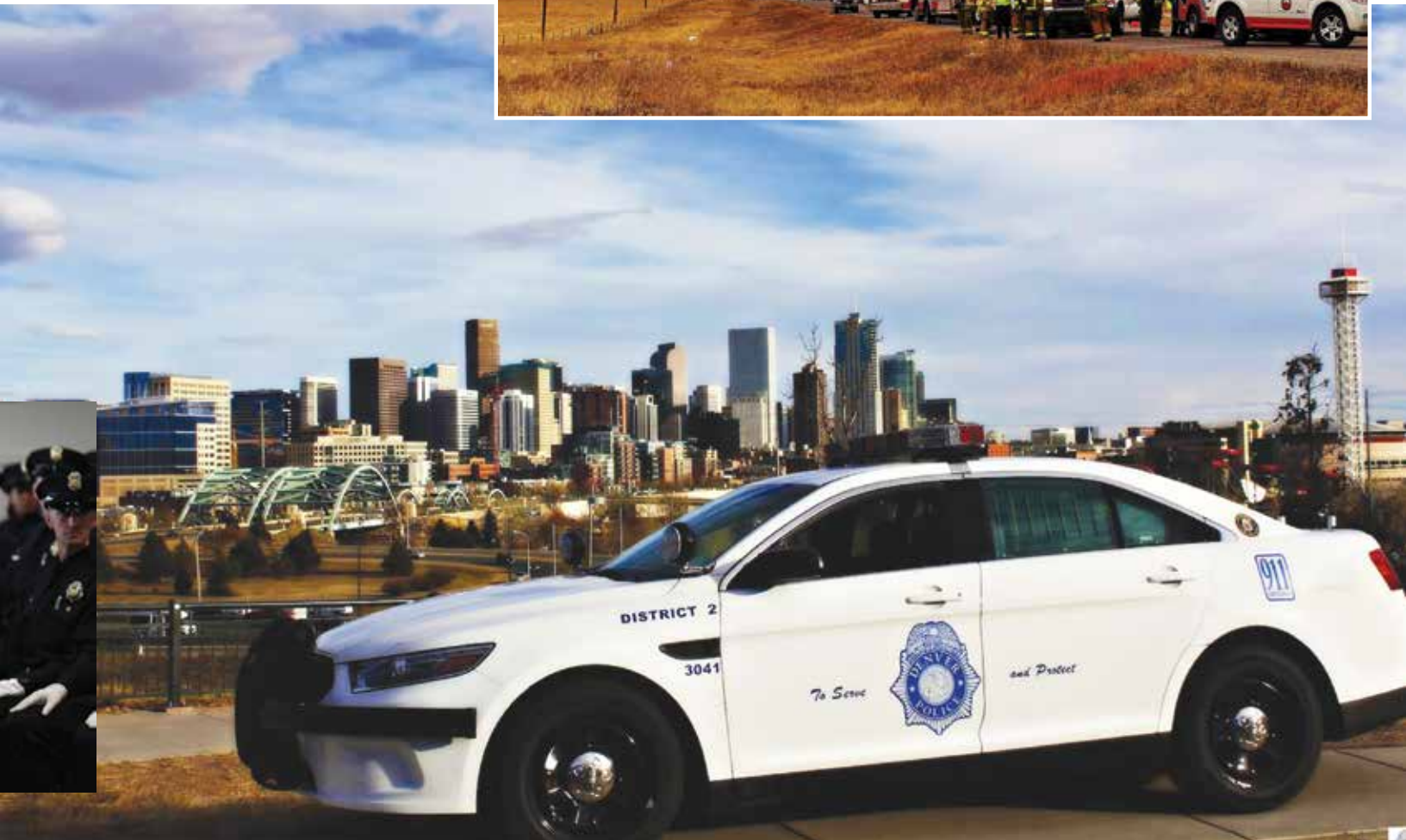
When things seem to add up too easily providers should be suspicious. (Occam's razor is not always accurate). Three unique case presentations from the EMS perspective are presented, applying clinical problem-solving skills, and assessment. Examine the easily deceiving vs the true diagnosis.

Session 69

Child Abuse And Neglect: Mandatory Reporting For EMS Providers

Matt Concialdi

Out of an estimated 60 million children in the U.S., three million cases of child abuse and neglect are reported each year. Unfortunately, thousands of cases fall through the cracks. This presentation provides information on the different types of abuse, how to engage the situation, and how to properly report cases.



Important Information

General Information

THREE WAYS TO REGISTER:



Register online at:

www.emsac.org

***By registering online, you can see in live time as the sessions fill up.*



Mail registration to:

Colorado State EMS Conference
2851 South Parker Road,
Suite 1210, Aurora, CO 80014



Fax registration to:

303-200-7099

Please print legibly or type all information on the registration form. Submit only one registrant per form; the form may be photocopied for additional registrations. Early-Bird fees are available for registrations received on or before Friday, October 19, 2018.

Registrations will not be accepted without accompanying payment. You may register with VISA or MasterCard or send with check payable to "Colorado State EMS Conference." A facility purchase order may be accepted as a guarantee of payment however, full payment must be received prior to the Conference. CE transcripts will not be provided until payment is made in full.



DO NOT MAIL registrations after

Monday, October 15, 2018. You will need to register at the conference after this date. Please note that lunch may not be provided for registrations received after Friday, October 19, 2018.

For questions about registration, contact the Colorado State EMS Conference Office at 303-317-6511 or 800-889-5690, or email to conference@emsac.org.



Early Bird Discount

Save up to \$30 on full conference fees by registering early!

Conference registration fees will increase after Monday, October 15, 2018.

Registration Options

Full-Conference Registration Friday, November 9 through Sunday, November 11

Full registration includes admission to general sessions, education sessions and exhibit hall. This option also includes continental breakfast on Friday, Saturday and Sunday; lunch on Friday and Saturday and a reception on Friday.

One-Day Registration Friday, Saturday or Sunday

Friday registration includes admission to the general session, education sessions and exhibit hall, continental breakfast, lunch and reception.

Saturday registration includes admission to the general session, education sessions and exhibit hall, continental breakfast, refreshments and lunch.

Sunday registration includes admission to education sessions and continental breakfast on Sunday, November 11.

Pre-Conference Workshops

Thursday, November 8, 2018

The pre-conference workshops offer something for everyone! Join us for these cost-effective, educationally intensive programs on Thursday, November 8. These courses have a low student-to-instructor ratio that will ensure your specific educational goals are met. The workshop instructors will delve into the topics and provide more interaction than in a typical class.

A separate registration fee is required for each workshop; fee includes admission to the class, educational materials, refreshments and lunch.

NOTE: For 2018 we will have a special two-day pre-conference workshop on Thursday and Friday.

Meal Functions

Complimentary continental breakfast will be served each morning of the conference from 7:30 a.m. to 8:00 a.m. Lunch will be provided for Conference attendees on Friday, November 9, and Saturday, November 10. **Due to logistics and catering requirements, lunch is not guaranteed for on-site registrations.**

Session RSVP

Attendees who have pre-registered will be seated first, and any available open seats in a session will be available on a first come-first served. On-site registrations cannot be guaranteed a seat in specific sessions. We have very popular and informative sessions that fill up quickly, so don't risk missing out. Register today!

EMSAC Member Discounts and Benefits

Membership benefits include chances to win special EMSAC prizes. For more information about EMSAC, please visit www.emsac.org.

Registration Confirmation

All registrants will be sent a registration confirmation prior to the conference via email.

Session Handouts

All materials received from the speakers prior to the conference will be posted on the EMSAC website at www.emsac.org. No printed handout materials will be distributed for education sessions.

CE Information

Conference sessions may be approved for continuing education credit by Colorado State Recognized Education Centers or CE Education Groups. Please visit the EMS Conference web site at www.emsac.org for recommended CE hours and suggested recertification categories. Most conference sessions will meet recertification requirements or the National Registry of EMTs. To determine if a particular session meets these requirements, you must first be familiar with the recertification requirements and objectives for your level of certification, then compare the session description to those requirements and objectives.

For information about NREMT recertification, please contact NREMT or visit their website at www.nremt.org.

On-Site Registration

The Conference Registration Desk will be located on the first floor of the Keystone Conference Center. Please stop by when you arrive at Keystone to pick-up your official conference name badge, schedule and other pertinent materials.

**Thursday, November 8, 2018
7:00 a.m. to 5:00 p.m.**

**Friday, November 9, 2018
7:00 a.m. to 5:00 p.m.**

**Saturday, November 10, 2018
7:00 a.m. to 5:00 p.m.**

**Sunday, November 11, 2018
7:30 a.m. to 12:00 p.m.**

Important Information

Cancellations/Refunds

All cancellations and requests for refunds must be submitted in writing to:

Colorado State EMS Conference

2851 South Parker Road, Suite 1210, Aurora, CO 80014, or by fax 303-200-7099. Requests received on or before October 19, 2018, will be entitled to a full refund less a \$30 processing fee. After October 19, 2018, and before October 31, 2018, the registrant will receive a credit certificate valid for use at the 2019 Colorado State EMS Conference. If for any reason the conference is not held in 2019, the certificate shall become null and void or reissued for a future conference or event. There are no refunds or credits for cancellations after October 31, 2018 or for no-shows.

Accommodations

Keystone Resort & Conference Center

U.S. Highway 6
Keystone, Colorado 80435
Reservations 800-258-0437
970-496-4240 / fax 970-496-4543
www.keystoneconferences.com

Keystone Resort is a spectacular setting amidst aspen and pine trees making it truly unique and a world away from the distractions you've left behind. Keystone Resort has the largest and most versatile meeting facilities in Colorado's Rocky Mountains, which are complimented by exceptional accommodations. Keystone Resort offers a variety of accommodation options at discounted group rates for EMS Conference attendees.

The Inn at Keystone

\$99 per night, single/double occupancy*
There is a \$10 per night Resort Fee for the Inn at Keystone.

The Keystone Lodge

\$135 per night, single/double occupancy*
There is a \$10 per night Resort Fee for The Keystone Lodge reservations.

Conference Village Studio

\$135 per night, single/double occupancy*

Conference Village One-Bedroom

Unit \$145 per night, single/double occupancy*

Conference Village Two-Bedroom Unit

\$190 per night, single/double occupancy*

*A \$10 resort fee will be charged above and beyond the housing rates listed above.

*Rooms are subject to applicable state

and local taxes in addition to a 5.9% resort surcharge. If your organization has tax exempt status, you must notify the hotel at the time of reservation and present a tax exempt certificate upon check-in. The 5.9% resort surcharge is applicable for all reservations regardless of tax exempt status.

If your organization qualifies for sales tax exemption, the proper documentation is REQUIRED prior to or at the time of check-in, or Keystone Resort will apply tax to your lodging charges. Each additional adult occupying the same unit will be charged \$20 per night. Children 18 and under stay free when accompanied by parent or guardian. Maximum occupancy may not be exceeded and additional beds will not be furnished. For Reservations, call 800-258-0437.

Group Discount Code: CM0EM8

Group rates will be honored for reservations made on or before

Friday, October 19, 2018.

Lodging is limited and available on a first-come basis. A deposit equal to the first night's lodging plus tax and surcharge in the form of check or credit card must accompany reservation. Check-in time is after 4:00 p.m.; guests may check-in earlier based on availability. Check-out time is before 11:00 p.m.

Directions to Keystone

From Interstate 70 take Silverthorne/Dillon exit 205. Go under the overpass onto Highway 6. Proceed approximately seven (7) miles to Keystone properties.

Transportation Options to Keystone

Keystone Resort spans seven miles along the Snake River and is the closest destination resort to DIA (Denver International Airport). The Keystone Conference Center sits roughly in the center of the resort. Many restaurants, shops, accommodations, and activities are within walking distance of the Conference Center. Navigating the full expanse of the resort is simple with the complimentary intraresort shuttle system. Once you check-in, there is no need for a car. Resort shuttle is provided through a combination of scheduled routes that serve Keystone Lodge, Conference Center Village, River Run Village, Keystone Mountain and on-call (EASE) Extended Area Service buses that serve outlying resort areas not located on a scheduled route.

Keystone is easily accessible via three Colorado airports:

- Denver International Airport is 90 miles east of Keystone via Interstate 70. DIA is a nonstop destination for over 21 national and international carriers.
- Vail/Eagle County Airport is 65 miles west of Keystone.
- Colorado Springs Municipal Airport is 109 miles from Keystone.

DIA Airport Shuttle

Getting to Keystone is easy via the door-to-door shuttle service of CME (Colorado Mountain Express). Numerous daily door-to-door shuttles run to and from Denver International Airport and your favorite Colorado resorts. For current rates, schedules and reservations, go to Colorado Mountain Express www.ridecme.com or call 800-525-6363.

Bus

Greyhound Bus Service offers transportation to Summit County, Colorado. Once you arrive at the Greyhound transfer station in Frisco, Colorado, it is necessary to take the free Summit Stage to complete the journey into Keystone. Greyhound: www.greyhoundbus.com.

Car Rental

Hertz, The Official Car Rental Company of Vail Resorts, and most major car rental companies are available at the Denver International Airport, Vail/Eagle County Airport and Colorado Springs Municipal Airport. Visit www.hertz.com. Transportation can also be arranged through Keystone Reservations at 800-258-0437.

Local Transportation

For traveling throughout Summit County, free transportation is provided by Summit Stage. More information is available at www.summitstage.com or 970-668-0999. Taxi service throughout Summit County is available from 2:00 p.m. to 2:00 a.m. daily. Rainbow Taxi can be reached at 970-453-TAXI.

Registration and attendance at, or participation in, the Colorado State EMS Conference and other activities constitutes an agreement by the registrant to the Colorado State EMS Conference's use and distribution of the registrant or attendee's image or voice in photographs, videotapes, electronic reproductions and audiotapes of such events and activities.

WHY JOIN EMSAC?

ADVOCACY | COMMUNICATION | EDUCATION



Individual Member Benefits

- Deep discount to attend the Colorado EMS Conference.
- Discounts on equipment and supplies through Savvik, a major equipment supplier.
- Discounts on equipment and supplies through Grainger.
- Discounted membership in National Association of EMTs.

Group Member Benefits

- Professional networking.
- Group rates for your staff at the Colorado EMS Conference.
- Free membership in Savvik, the national EMS buying co-op.
- Affiliate discount for NAEMT membership.
- Free CMD Membership.



Sustaining Member Benefits

- A full-page ad or equivalent annually in the EMSAC Star publication, valued at \$250.
- Discount on additional paid display advertising.
- Free CMD Membership for agency sustaining members.
- Two electronic advertisements annually with click-through link in the EMSAC Member E-Mail Update (EMU).
- Access to individual group and EMS-Chiefs, mailing list once every year.
- Opportunity for your organization to annually be profiled in the EMSAC Star newsletter.



Registration Form

Page 1 of 4

Colorado State EMS Conference – November 8-11, 2018 – Keystone Resort & Conference Center, Keystone, Colorado
Please print or type all information below. One registrant per form; this form may be photocopied for additional registrations. Registrations will not be accepted without accompanying payment. Facility purchase order may be accepted as payment guarantee and full payment must be received prior to the conference. If payment has not been received, participants will be asked to provide payment information prior to picking up their packet.

REGISTRANT INFORMATION

Please print legibly or type. This information will appear on your name badge and other conference materials.

First Name _____ Last Name _____

EMS Provider Level: ☐ First Responder ☐ EMT ☐ EMT-I ☐ Paramedic ☐ Nurse Physician ☐ Other: _____

EMS Agency _____

The mailing address below is: ☐ Work address ☐ Home address

Mailing Address _____

City _____ State _____ Zip _____

E-mail Address _____ (Registration confirmations will be sent via email.)

Daytime Telephone (_____) _____ Fax (_____) _____

☐ The conference may provide its mailing list to outside companies. These companies have been approved by the conference to send communications to attendees either by mail or by email. Please check the box above to **opt out** of both mail and email lists.

EMSAC MEMBERSHIP

☐ Check here to join EMSAC for \$40 for an individual membership and receive the member rate for an individual registration. We offer a discounted squad rate for EMSAC Group Members only.

Please note: In order to receive the member rate your membership must be active through the end of November. Group registrations may be processed through the online registration system. A list of all individuals that will be submitting registrations through your squad **MUST** be sent to the conference office (Fax 303-200-7099, Email: Conference@emsac.org) as well as, a contact name, address and phone number. Please note if your squad does not reach the minimum number required for Group Registration you will be billed the difference.

INDIVIDUAL REGISTRATION

ADVANCE REGISTRATION ON OR BEFORE 10/19/18

***There will be a 10% price increase for all on-site registrations.*

INDIVIDUAL ADVANCED REGISTRATION (advanced registration close October 19, 2018)

	Member	Non-Member
Conf '18 Full Conference Registration	<input type="radio"/> \$299	<input type="radio"/> \$399
Conf '18 - PCAD Pre-conference with Full Conference Registration	<input type="radio"/> \$474	<input type="radio"/> \$574

GROUP REGISTRATION (must be a group member of EMSAC)

Conf '18 Full Conference Registration (4+ attendees from the same agency)	<input type="radio"/> \$270	N/A
Conf '18 - PCAD Pre-conference with Full Conference Registration (4+ attendees from the same agency)	<input type="radio"/> \$450	N/A

SINGLE DAY CONFERENCE REGISTRATION

Conf '18 Friday, November 9, 2018 (includes lunch, if pre-registered)	<input type="radio"/> \$175	<input type="radio"/> \$185
Conf '18 Saturday, November 10, 2018 (includes lunch, if pre-registered)	<input type="radio"/> \$175	<input type="radio"/> \$185
Conf '18 Sunday, November 11, 2018 (includes lunch, if pre-registered)	<input type="radio"/> \$75	<input type="radio"/> \$85

PRE-CONFERENCE WORKSHOPS

Conf '18 PCAD1, PCAD2, PCAD4, PCAD6	<input type="radio"/> \$175	<input type="radio"/> \$195
Conf '18 PCAD5 Morning	<input type="radio"/> \$100	<input type="radio"/> \$125
Conf '18 PCAD5 Afternoon	<input type="radio"/> \$100	<input type="radio"/> \$125
Conf '18 PCAD3 Thursday and Friday	<input type="radio"/> \$200	<input type="radio"/> \$220

TOTAL

Registration Form

PRE-CONFERENCE WORKSHOP PRE-CONFERENCE WORKSHOP

Page 2 of 4

Please check the box for each class which you wish to attend. Class sizes are limited and classes will be filled in the order in which registrations are received.

SESSION	TITLE	SPEAKER
THURSDAY, NOVEMBER 8, 2018 ALL DAY		
<input type="radio"/> PCAD1	Cardiac Care Boot Camp	Carl Craigle
<input type="radio"/> PCAD2	Street Drugs—What You Need To Know	Lynn Riemer
<input type="radio"/> PCAD3*	(TWO DAY) ALS Refresher Core Content Workshop	Jonathan Politis and Paul Werfel
<input type="radio"/> PCAD4	Critical Care Refresher	Reuben Farnsworth
<input type="radio"/> PCAD5*	Updates And Practice In Pre-hospital Burn Care	Anne Wagner
<input type="radio"/> PCAD6	Pre-Conference Cadaver Lab	Kevin McVane, MD; Aaron Eberhardt, MD; Whitney Barrett, MD; and Lara Rappaport

COURSE REGISTRATION

Please check the box for each class which you wish to attend. Class sizes are limited and classes will be filled in the order in which registrations are received.

SESSION	TITLE	SPEAKER
FRIDAY, NOVEMBER 9, 2018 10:30 PM TO 12:00 PM		
<input type="radio"/> PCAD3*	ALS Refresher Core Content Workshop (TWO DAY, ALL DAY)	Jonathan Politis and Paul Werfel
<input type="radio"/> 1	Misses And Mimics: Advanced 12 Lead For ALS Providers	Dylan Luyten
<input type="radio"/> 2	Crashing Asthmatic	Chris Mulberry
<input type="radio"/> 3	TMI on Pediatric TBI	Maria Mandt
<input type="radio"/> 4	Letting Good People Make Bad Decisions: Consent And Refusal In EMS	Shane Baird
<input type="radio"/> 5	The Protocol Paradox	Steven Grayson
<input type="radio"/> 6 *	Cadaver Lab Abdominal	Sue Sloan, MD
<input type="radio"/> HOS1	Hands-On Skills—St. Anthony's Prehospital Services ALS/BLS	St. Anthony's Prehospital Services
FRIDAY, NOVEMBER 9, 2018 1:30 PM TO 2:30 PM		
<input type="radio"/> 7	You're Lost Without A MAP	Shane Baird
<input type="radio"/> 8	EKG's for EMT's—MI Recognition For EMS Personnel	David Sanko
<input type="radio"/> 9	A Trauma Patient With Burns: Managing Competing Interests And Priorities	Arek Wiktor, MD
<input type="radio"/> 10	Electronics In EMS: Treat Your Patient, Not Your App	Reuben Farnsworth
<input type="radio"/> 11	Stroke From The Field To Comprehensive care	Russell Bartt, MD
<input type="radio"/> 12*	Cadaver Labs Abdominal	Sue Sloan, MD
<input type="radio"/> HOS2	Hands-On Skills—Flight For Life ALS/BLS	Flight For Life Colorado
FRIDAY, NOVEMBER 9, 2018 3:00 PM TO 4:00 PM		
<input type="radio"/> 13	Let's Catch A Baby! Pitfalls Of Newborn Care	Timothy Neaderhiser
<input type="radio"/> 14	What's An Ache Like You Doing In A Joint Like This? Hands-On Orthopedic Assessment	Steven Grayson
<input type="radio"/> 15	More Case Reviews For The ALS Provider—2018	David Sanko
<input type="radio"/> 16	Bedrooms, Bathtubs, and Broomsticks: Things They Didn't Warn Me About In Paramedic School	Reuben Farnsworth
<input type="radio"/> 17	Death by Ventilation! And Other Airway Management Tips!	Chris Mulberry
<input type="radio"/> 18*	Cadaver Lab Thoracic	Charles Mains, MD
<input type="radio"/> HOS3	Hands-On Skills—Flight For Life ALS/BLS	Flight For Life Colorado
FRIDAY, NOVEMBER 9, 2018 4:15 PM TO 5:15 PM		
<input type="radio"/> 19	Got ROSC And How To Kkeep It	Timothy Neaderhiser
<input type="radio"/> 20	What's That In My Patient?: The Good, The Bad, And The Implanted	Reuben Farnsworth
<input type="radio"/> 21	The Imperfect Storm	Gina Scarbrough
<input type="radio"/> 22	Prehospital Recognition And Treatment Of Type I Diabetes	Justin Harper
<input type="radio"/> 23	How To Deliver Bad News	Julie Hall
<input type="radio"/> 24*	Cadaver Lab Thoracic	Charles Mains, MD

Registration Form

COURSE REGISTRATION CONT...

Please check the box for each class which you wish to attend. Class sizes are limited and classes will be filled in the order in which registrations are received.

SESSION	TITLE	SPEAKER
SATURDAY, NOVEMBER 10, 2018 8:00 AM TO 9:30 AM		
<input type="radio"/> 25	Head And Neck Emergencies	William Ferguson
<input type="radio"/> 26	Assessment With A Purpose	Dennis Edgerly
<input type="radio"/> 27	Pediatric EMS Cases Studies	Paul Werfel
<input type="radio"/> 28	Neurotoxins Of Mass Destruction	John Nichols
<input type="radio"/> 29	Trauma Trivia: Learning Can Be Fun!	Jason Martin
SATURDAY, NOVEMBER 10, 2018 9:45 AM TO 11:15 AM		
<input type="radio"/> 30	Capnography: Best Practices, Documentation, And Advanced Uses	Steven Grayson
<input type="radio"/> 31	Aneurysms for EMTs and Medics	Paul Werfel
<input type="radio"/> 32	Coroner Scenes And The First Responder 2018	Thomas Weldon
<input type="radio"/> 33	The Golden Years: Care Of The Trauma Geriatric Patient	Jason Martin
<input type="radio"/> 34	Avoiding The Star Of Stupidity: Ethics For EMS	Jonathan Politis
<input type="radio"/> 35*	Cadaver Lab Brain	Jennifer Kang, MD
<input type="radio"/> HOS4	Hands-On Skills–Children’s Hospital Colorado ALS/BLS	Children’s Hospital ED Physicians
SATURDAY, NOVEMBER 10, 2018 11:30 AM TO 12:30 PM		
<input type="radio"/> 36	Crew Resource Management, Who’s Got Your Back	Dennis Edgerly
<input type="radio"/> 37	Managing The Difficult Airway With Basics!	Jonathan Politis
<input type="radio"/> 38	Syncope : Risk Stratification And Management	William Ferguson
<input type="radio"/> 39	Dingers, Stunners And Getting Your Bell Rung: Recognition And Treatment of Concussions	Steven Grayson
<input type="radio"/> 40	The Crashproof Mindset; Safer Operation Of The Emergency Vehicle With A Sterile Flight Deck	Timothy Zimmerman
<input type="radio"/> 41*	Cadaver Lab Brain	Jennifer Kang, MD
<input type="radio"/> HOS5	Hands-On Skills–HealthOne EMS ALS/BLS	HealthOne EMS
SATURDAY, NOVEMBER 10, 2018 12:00PM TO 1:30 PM		
<input type="radio"/> 42	Hospital, Flight, Private, And Fire Based EMS–Past, Present, And Future	Eugene Eby, Kathleen Mayer, John Mason, and Robert Lovelace
SATURDAY, NOVEMBER 10, 2018 1:45PM TO 3:15 PM		
<input type="radio"/> 43	Cardiac Assessment, The 12 Lead And Beyond	Dennis Edgerly
<input type="radio"/> 44	Treating The Bleeding Patient In 2018	Jason Martin
<input type="radio"/> 45	A walk In The park...Case Studies In Wilderness Medicine And Backcountry Rescue	Jonathan Politis
<input type="radio"/> 46	Fluids, Pressors, and Luck–Managing Hypotension	Don Stroup
<input type="radio"/> 47	Laugh Out Loud Until You Gasp For Air: Psychoneuroimmunology, The EMS Providers Best Friend	Mark Brown
<input type="radio"/> 48*	Cadaver Lab Heart Dissection	Scott Branney, MD
<input type="radio"/> HOS6	Hands-On Skills–Children’s Hospital Colorado ALS/BLS	Children’s Hospital ED Physicians
SATURDAY, NOVEMBER 10, 2018 3:45 PM TO 4:45 PM		
<input type="radio"/> 49	A Look Inside: Syncope Revealed In The ECG	Michael Overbeck
<input type="radio"/> 50	Carbon Monoxide Emergencies	Paul Werfel
<input type="radio"/> 51	Emergency Medicine Hodge-Podge II	William Ferguson
<input type="radio"/> 52	Frostbite In January...Amputation In July: Have We Advanced Beyond Supportive Care?	Anne Wagner
<input type="radio"/> 53	Addictions In EMS And Those We Serve	Jeff Rehman
<input type="radio"/> 54*	Cadaver Lab Heart Dissection	Scott Branney, MD
<input type="radio"/> HOS7	Hands-On Skills–HealthOne EMS ALS/BLS	HealthOne EMS

Registration Form

Page 4 of 4

COURSE REGISTRATION CONT...

Please check the box for each class which you wish to attend. Class sizes are limited and classes will be filled in the order in which registrations are received.

SESSION	TITLE	SPEAKER
SUNDAY, NOVEMBER 11, 2018 8:00 AM TO 9:15 AM		
<input type="radio"/> 55	Effective Strategies For Transport Ventilation	David Kearns
<input type="radio"/> 56	Understanding And Responding To Children In Crisis: A Resource Kit for EMS & ED Providers	Lynn Garst
<input type="radio"/> 57	That's Going To Leave A Mark!	Jason Martin
<input type="radio"/> 58	Post Traumatic Stress Disorder In Emergency Medical Services	Tom Lombardo
<input type="radio"/> 59	Colorado EMS And Trauma: State Of The State	Jeanne-Marie Bakehouse
SUNDAY, NOVEMBER 11, 2018 9:30 AM TO 10:45 AM		
<input type="radio"/> 60	Cardiac Arrest, TOR And LVAD	David Richter
<input type="radio"/> 61	Location, Location, Location: Penetrating Trauma Care	Jason Martin
<input type="radio"/> 62	Identifying Pediatric Victims Of Human Trafficking	Kristi Elsener
<input type="radio"/> 63	When Mutual Aid Isn't Enough—Responding to a Category A Bioterrorism Agent Or Nerve Agent Attack	Stephanie Burke
<input type="radio"/> 64	Using Patient Engagement In The Quality Management Process	Marc Burdick
SUNDAY, NOVEMBER 11, 2018 11:00 AM TO 12:15 PM		
<input type="radio"/> 65	Street Drugs—The Opioid Epidemic	Lynn Riemer
<input type="radio"/> 66	When The Frail Fall: Principles In Geriatric Trauma Evaluation And Management	Gina Soriya, MD
<input type="radio"/> 67	Yet MORE Cases That Make You Go...“HMMMMM!”	Jeff Rehman
<input type="radio"/> 68	How Sure Is Sure Enough?	Robert Putfark
<input type="radio"/> 69	Child Abuse And Neglect: Mandatory Reporting For EMS Providers	Matt Concialdi

PAYMENT

Registration will not be accepted without accompanying payment or facility purchase order. Payment is due in full prior to the conference. If payment has not been received, participants will be asked to provide payment information prior to picking up their packet.

☐ Check enclosed (payable to Colorado State EMS Conference) ☐ Purchase Order # _____ Credit Card: ☐ MasterCard ☐ VISA ☐ Discover ☐ American Express

Cardholder's name (print) _____

Card Number _____ - _____ - _____ Expiration Date ____/____/____

Cardholder's signature _____ Cardholder's Zip Code _____ CW _____

SPECIAL NEEDS

If you have any special needs, please contact us by phone at 303-317-6511 or by e-mail at conference@emsac.org

Please return with payment to: Colorado State EMS Conference, PO Box 3406, Englewood, CO 80155, Fax: 303-200-7099 or Register online at www.emsac.org
DO NOT MAIL this form after October 15, 2018. Please plan to register on-site at the conference after this date. Meals are not guaranteed for on-site registrants.



2018 Colorado State EMS Conference Committee

Conference Chair/ Media Relations

Jason Kotas
EMS Program Manager
Children's Hospital Colorado

Conference Co-Chair/Sponsorship Coordinator

DJ Head
Gilpin Ambulance Authority

Audio Visual Coordinator

Sean Ellis
Fire Chief
Federal Heights-Fire Department

Audio Visual / Exhibits Assistant

Joe White
EMS Chief
Palisade Fire Department

Cadaver Lab

Tim Gulbranson
EMS Training Coordinator
Denver Health and Hospital Authority
Emergency Medical Services (EMS)-
Paramedic Division

Curriculum Coordinator

Rob Sontag
Fire Prevention Branch Chief
Colorado Department of Public Safety
Division of Fire Prevention & Control

Entertainment Coordinator

Michael Scott
EMS Division Chief
Colorado River Fire Rescue

Exhibits Coordinator

Jim Leist
Firefighter/Paramedic
Mountain View Fire Protection District

Food & Beverage Coordinator

Patricia Tritt
Director of Instruction
NCTI/AMR

Hands-On Skills Coordinator

Ken Rogers
Colorado Mountain College

Registration / CE Reporting Coordinator

'The Badger'
Ross Riley
Captain, North Metro Fire Rescue District

Volunteer Coordinator Chair

Billie Given
RNBSN and EMTB-IV
Lincoln Community Care Center and Limon
Ambulance Service

EMSAC President

Scott Sholes
EMT Chief
Durango Fire & Rescue Authority

EMSAC State Representative

Mike Bateman
EMS Education and Practice Coordinator
Emergency Medical & Trauma Services
Branch

Executive Director

Dorothy Shadrick, MBA, CAE
Chief Association Executive

Conference Management

Reese Lee

Conference Coordinator

Emma Gremel

Conference Registration

Kasandre Brown





Join us next year!
November 7-10, 2019